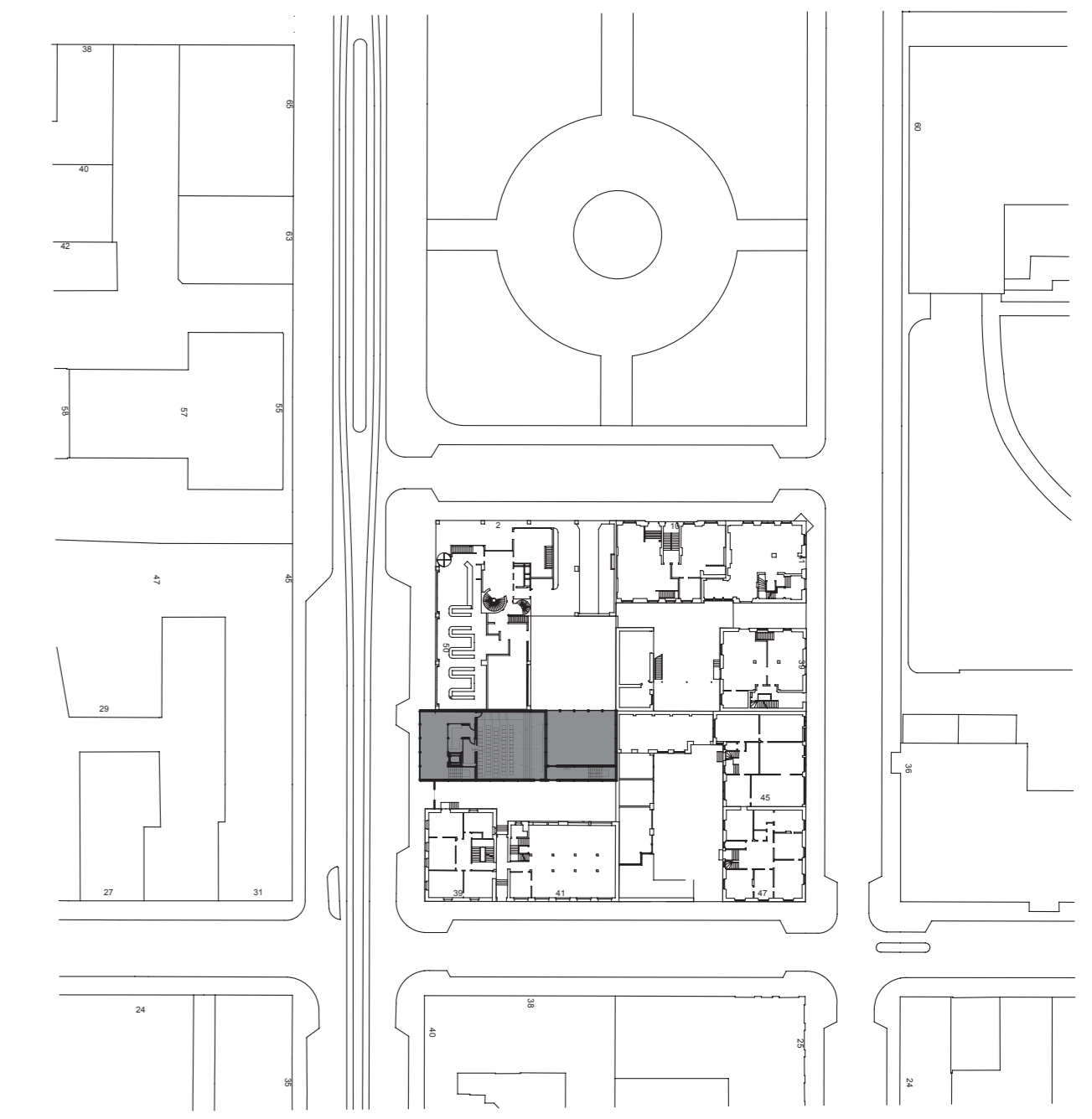


Dachaufbau	40mm
Kiesschüttung	
Kunststoffabdichtungsbahn	
Wärmedämmung	100mm
Dampfsperre	
Überbeton im Gefälle	20-80mm
Stahlträger	300mm
Gipsplatte	20mm

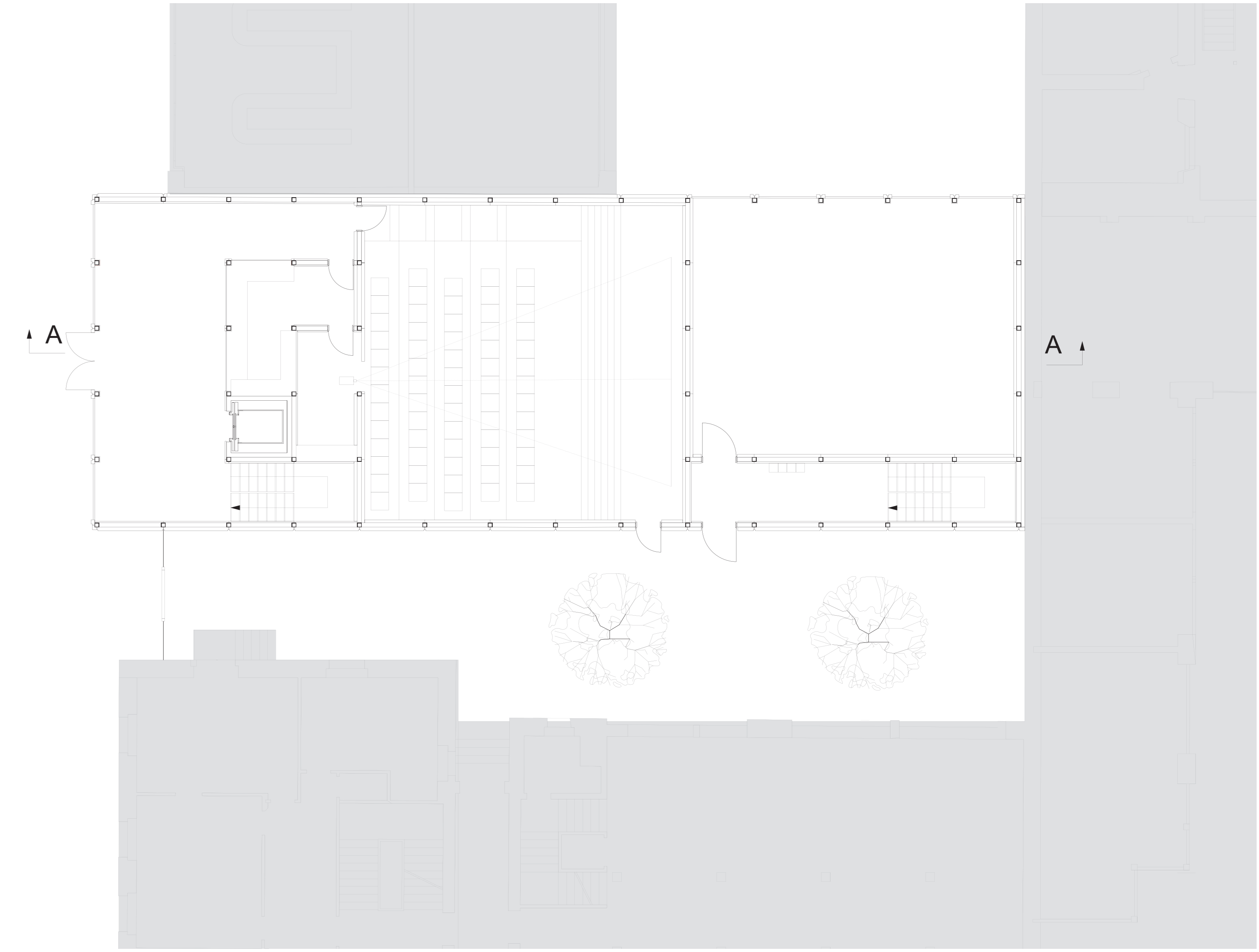
Deckenaufbau	20mm
Bodenbelag	60mm
Unterlagsboden	
Trennlage (Kunststoffolie)	
Trittschalldämmung	20mm
Beton	150mm
Stahlträger	300mm
Gipsplatte	20mm

Bodenaufbau	20mm
Bodenbelag	60mm
Unterlagsboden	80mm
Dämmung	
Feuchtigkeitssperre	
Beton	400mm
Magerbeton	50mm

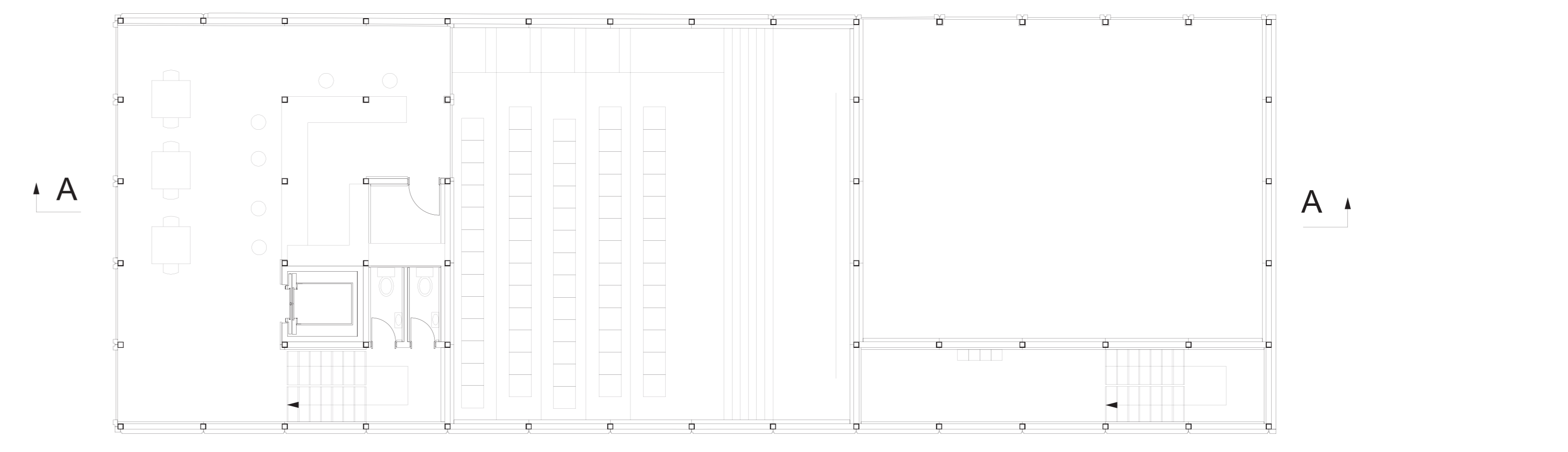
Wandaufbau	
Sandwichelement: Kupfer	0,8mm
Wärmedämmung	160mm
Stahlblech	0,8mm
Stahlstütze	150mm
Gipsplatte	20mm



Situation 1:1000

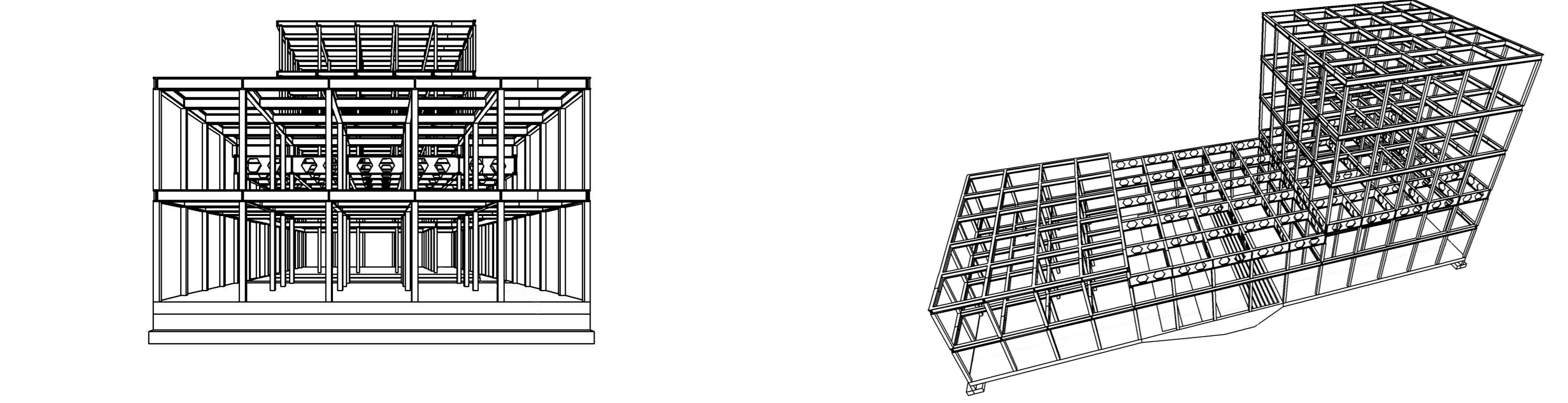


EG 1:100

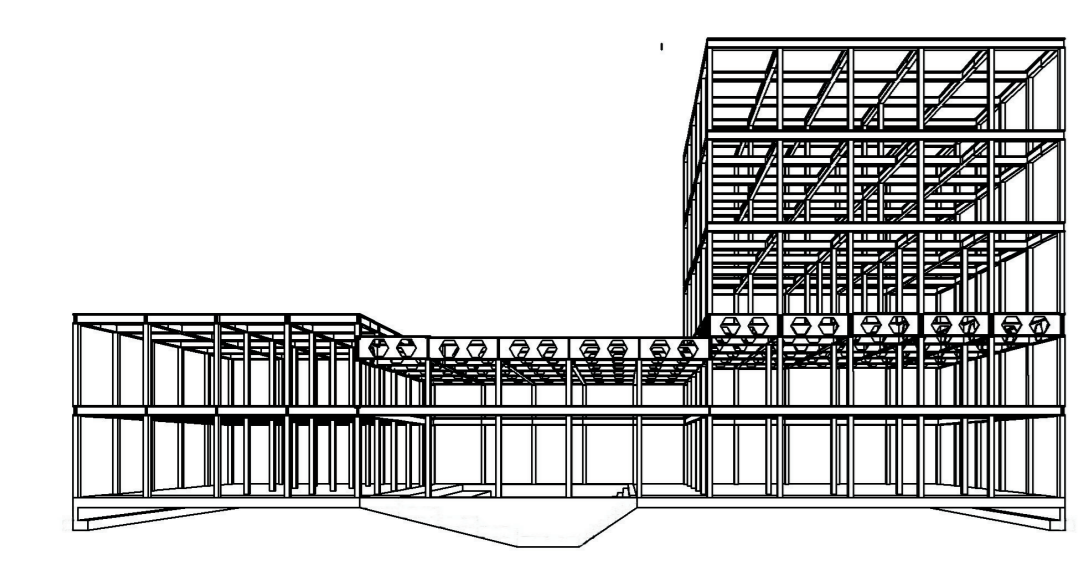


1.OG 1:100

Digital Mockup



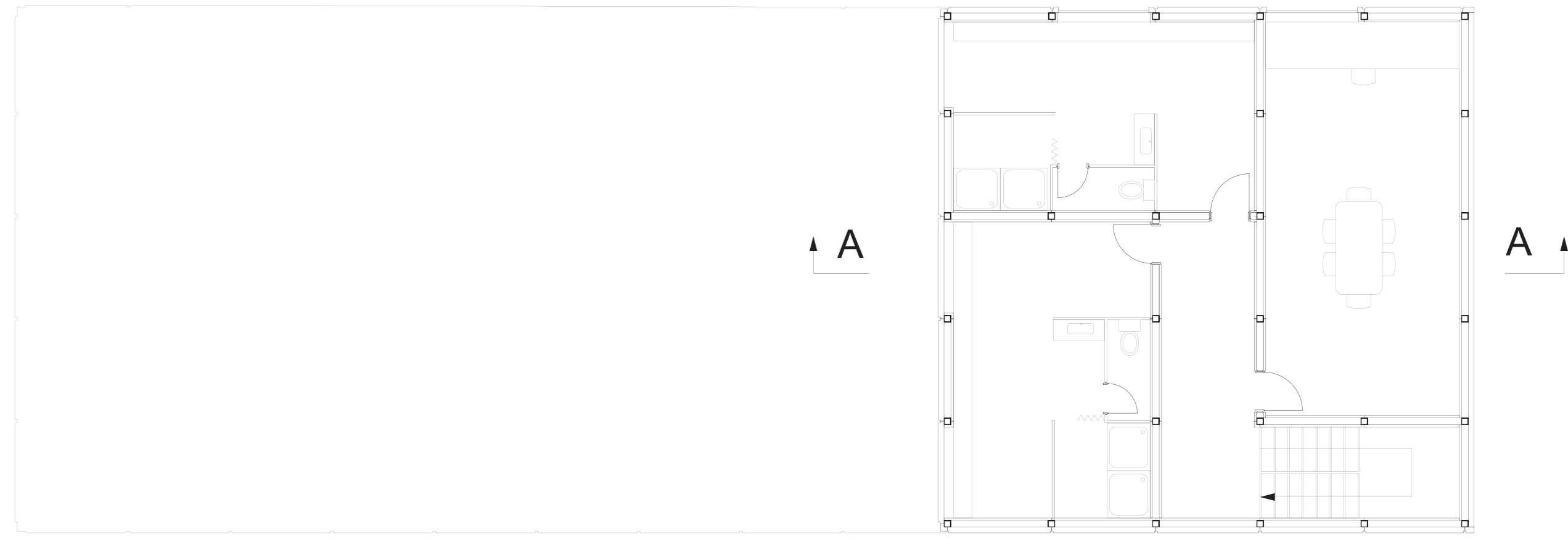
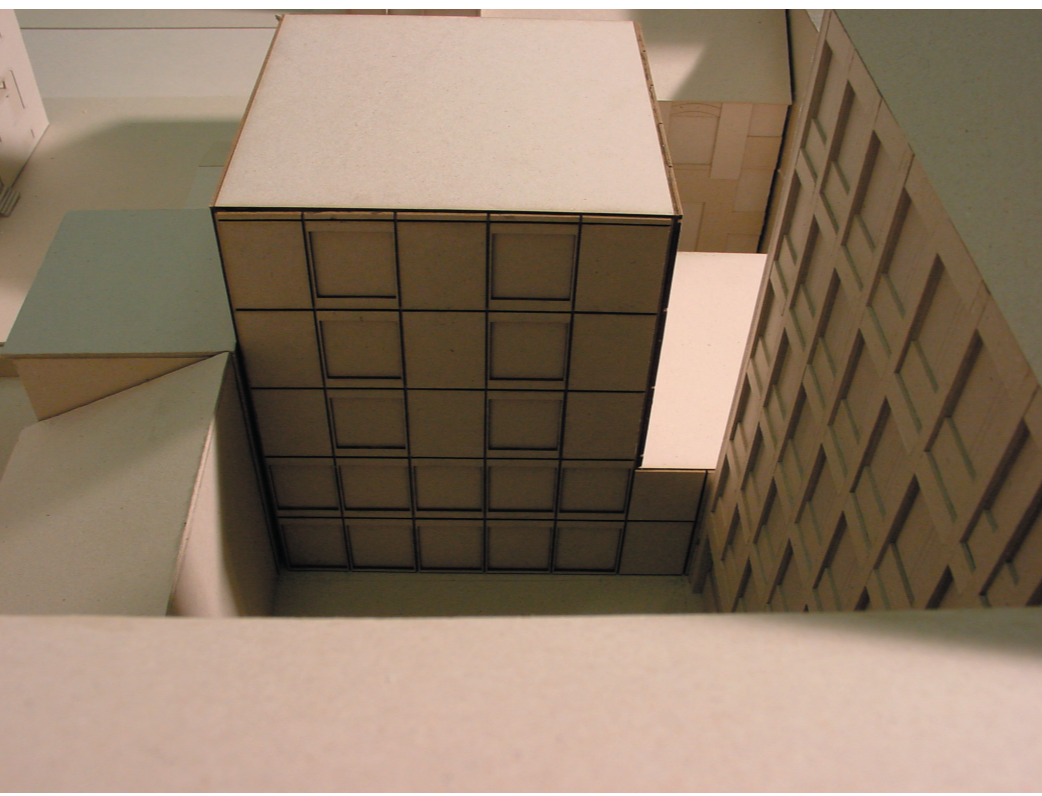
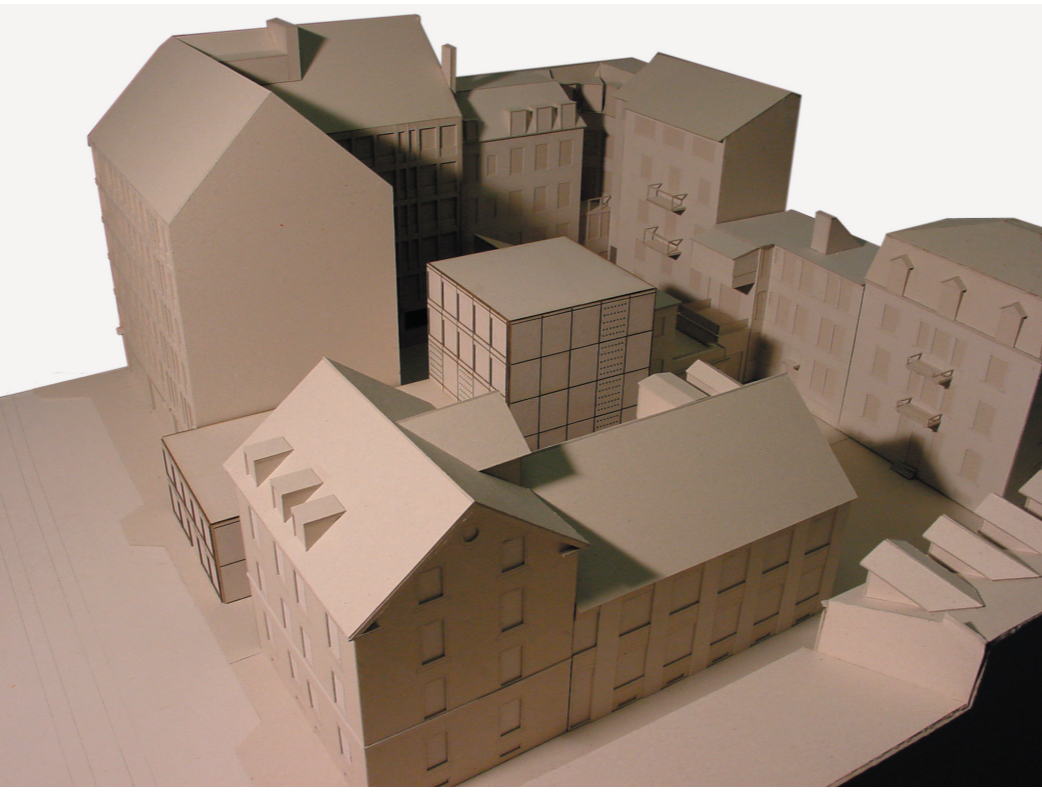
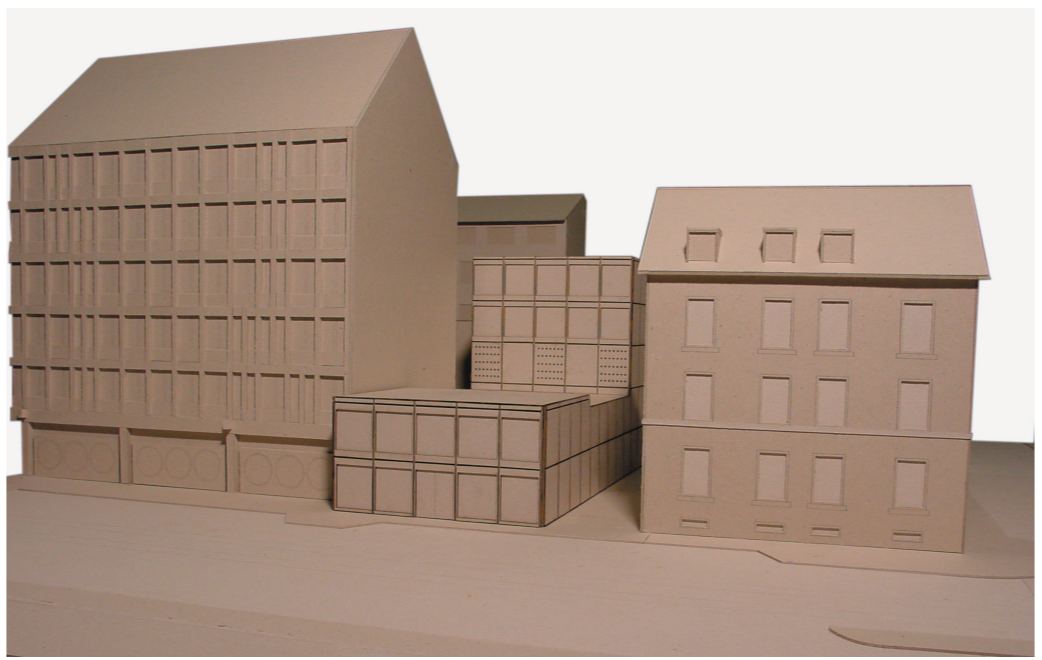
Struktur



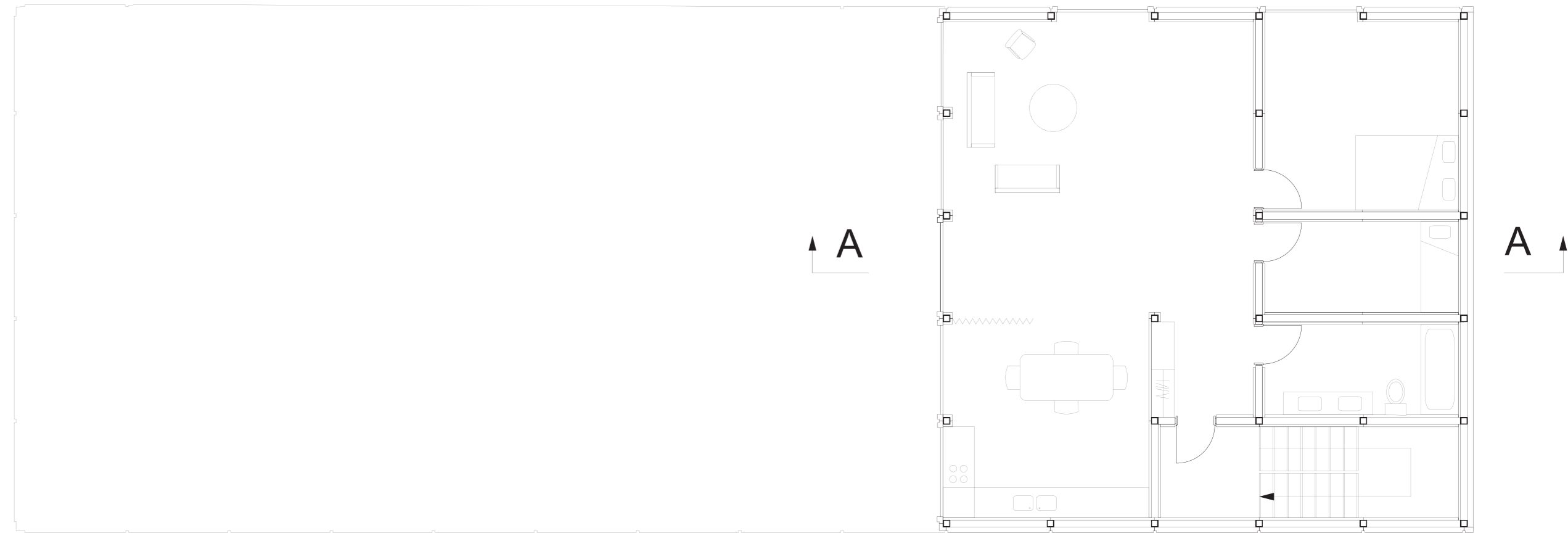
Fügung der Elemente



Innenraumperspektive Tai-Chi



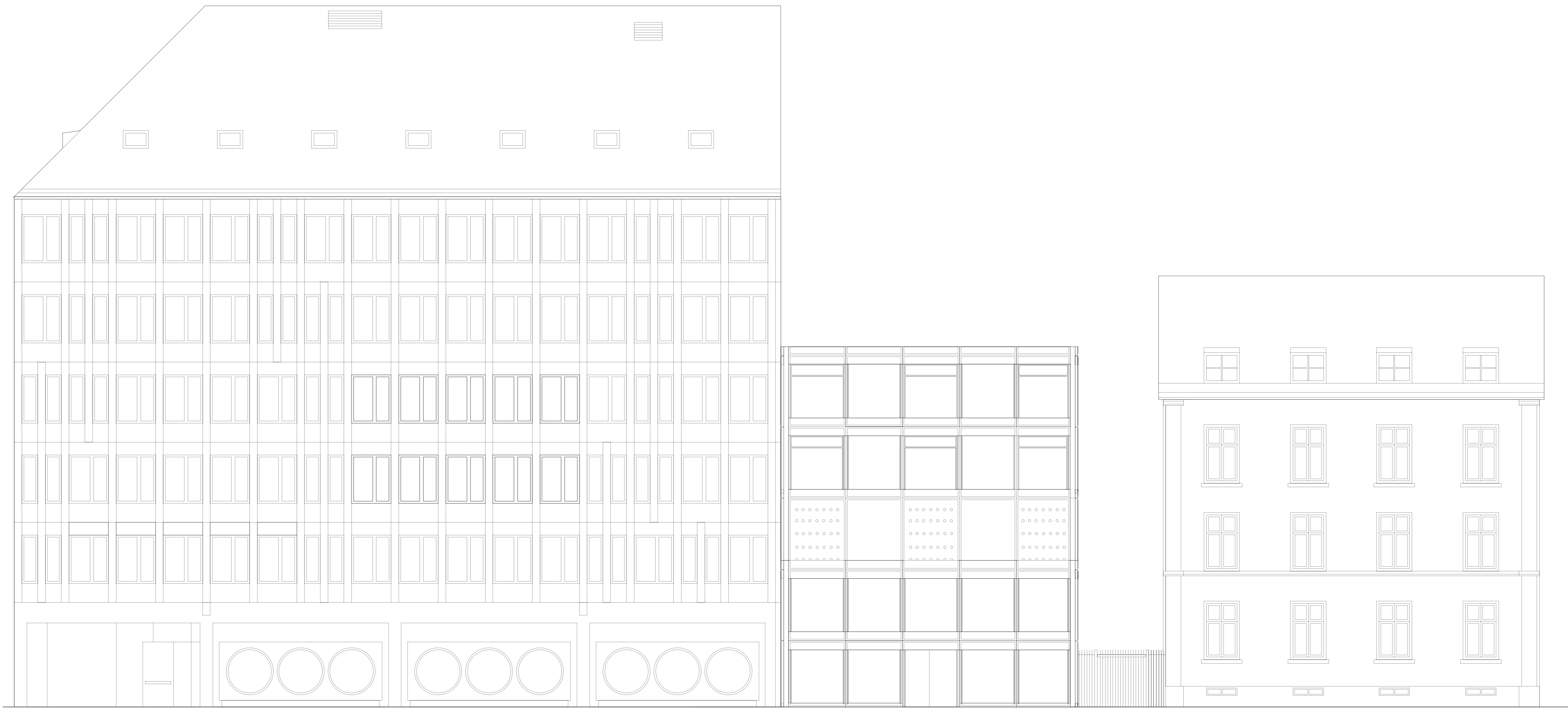
2.OG 1:100



3. und 4. OG 1:100



Schnitt A-A 1:100



Ansicht Nordfassade 1:100